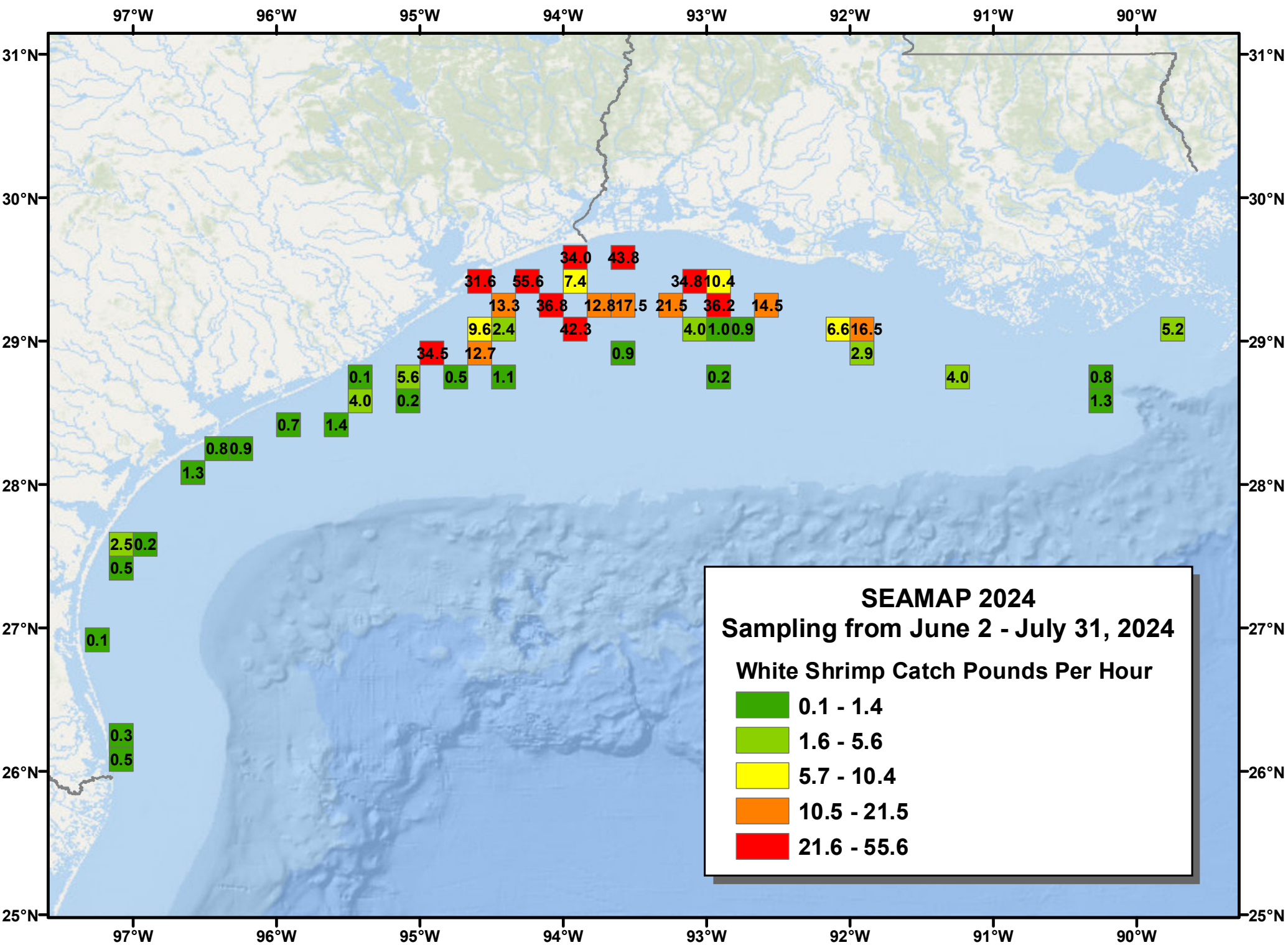


SEAMAP 2024
Sampling from June 2 - July 31, 2024

Brown Shrimp Catch Count Per Pound

7 - 21
22 - 35
36 - 48
49 - 65
66 - 95



97°W

96°W

95°W

94°W

93°W

92°W

91°W

90°W

31°N

31°N

30°N

30°N

29°N

29°N

28°N

28°N

27°N

27°N

26°N

26°N

25°N

25°N

97°W

96°W

95°W

94°W

93°W

92°W

91°W

90°W

2.5
0.5

0.1

0.3
0.5

1.3

0.8
0.9

0.7

1.4

0.1
4.0

5.6
0.2

34.5

0.5

12.7

1.1

31.6

13.3

55.6

34.0

7.4

43.8

36.8

42.3

12.8

17.5

0.9

21.5

34.8

10.4

36.2

14.5

0.2

4.0

1.0

0.9

6.6

16.5

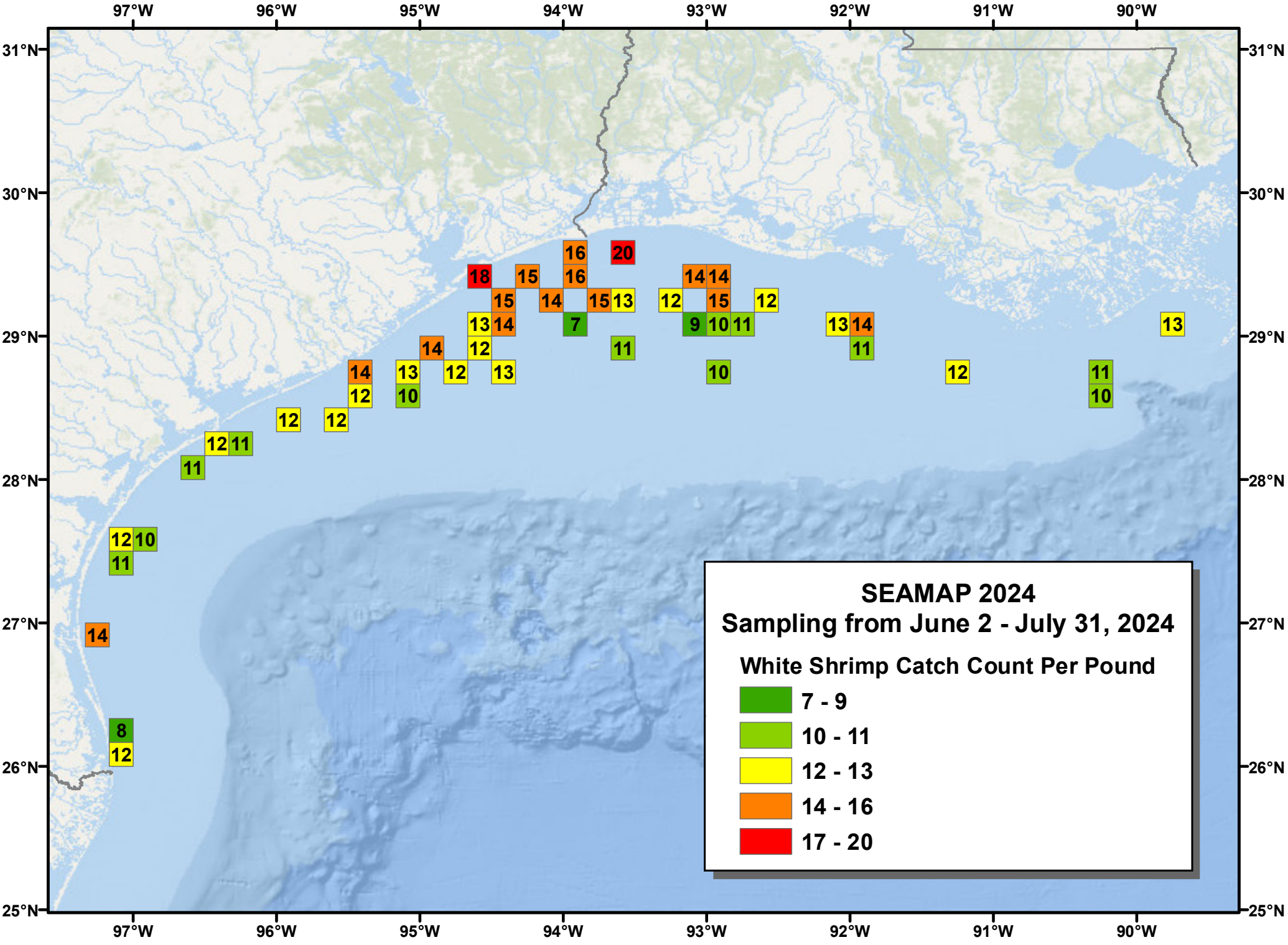
2.9

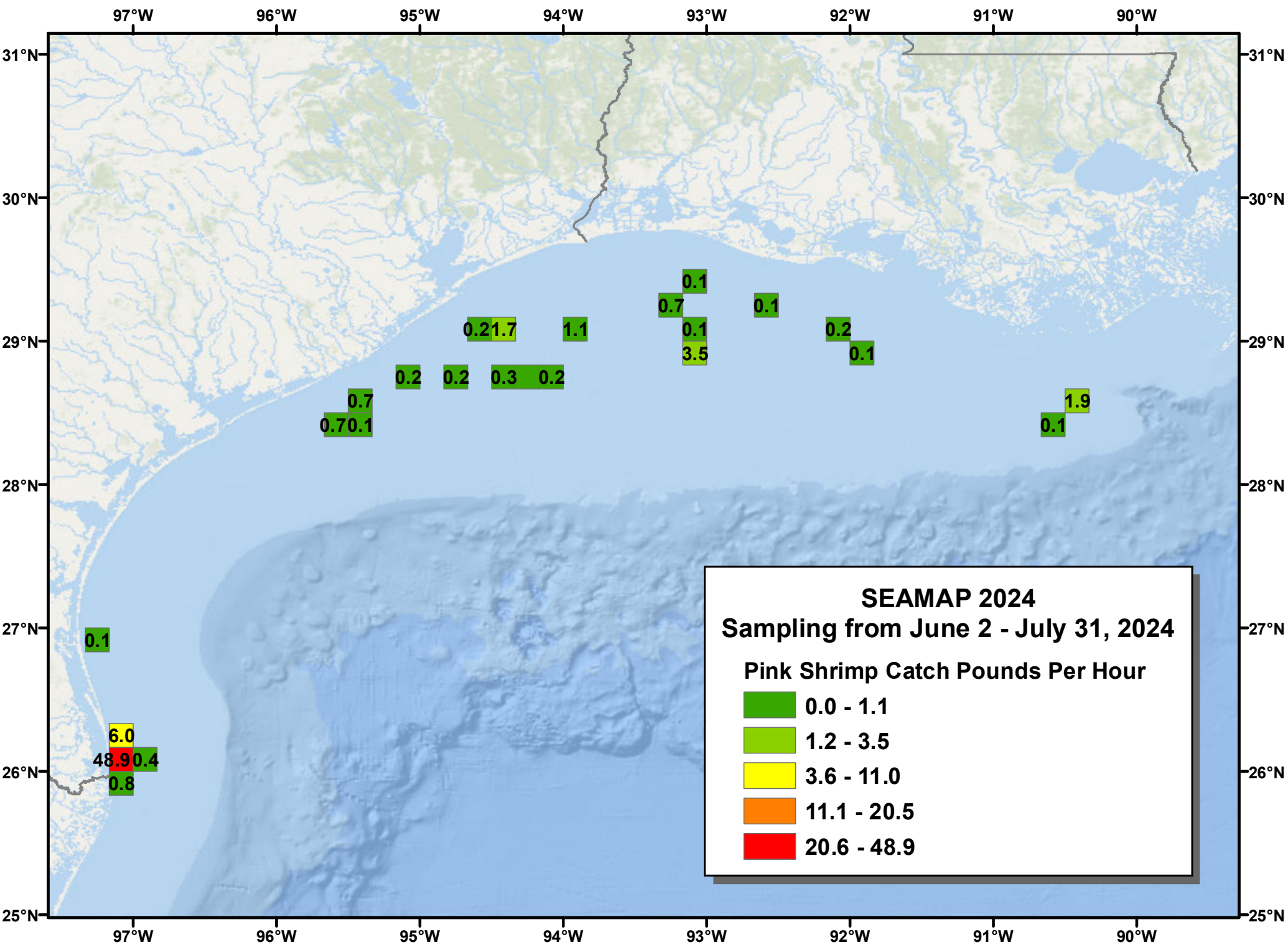
4.0

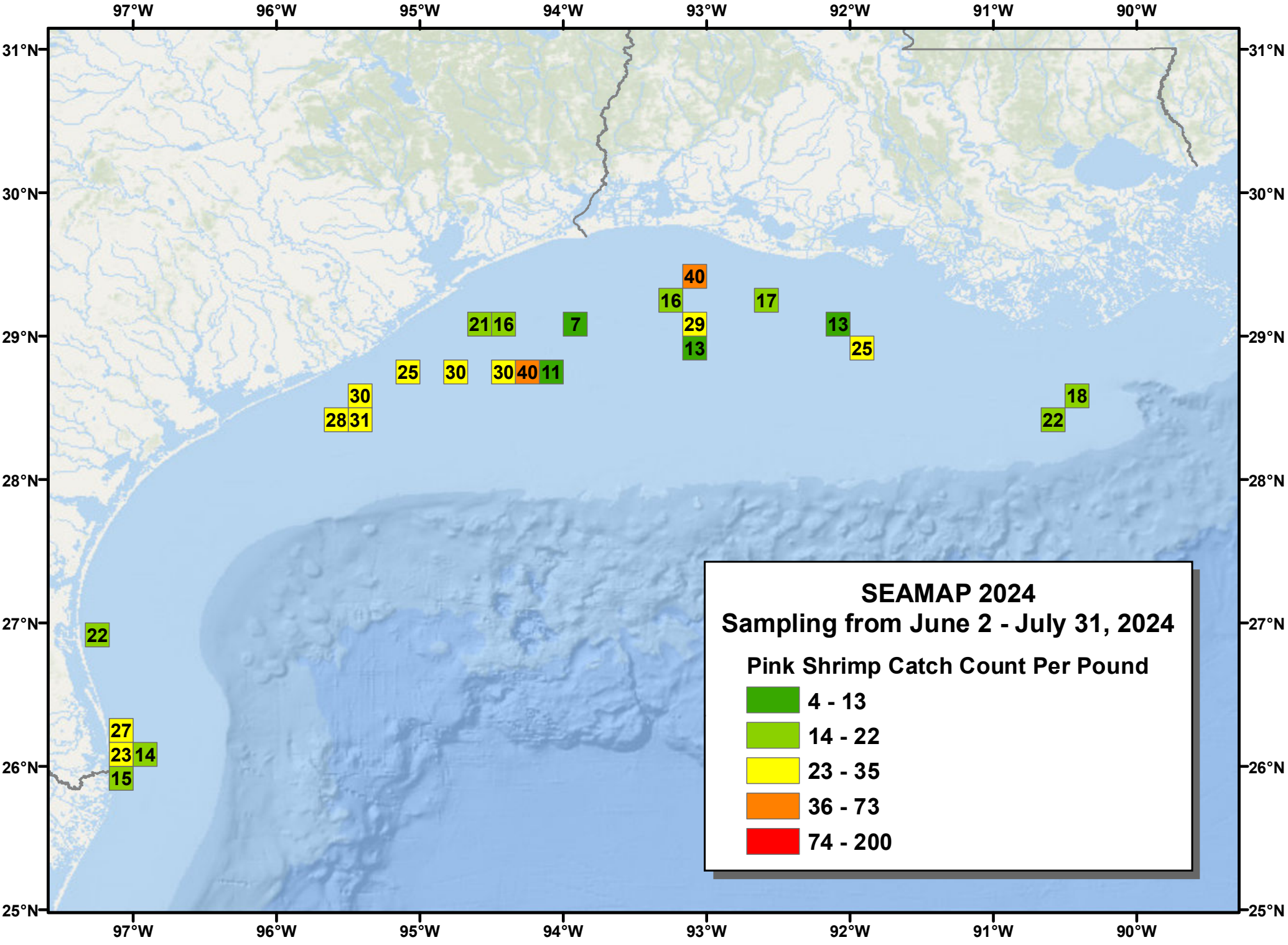
0.8

1.3

5.2







22

27
23 14
15

28 31
30

25

30

30 40 11

21 16

7

16

29
13

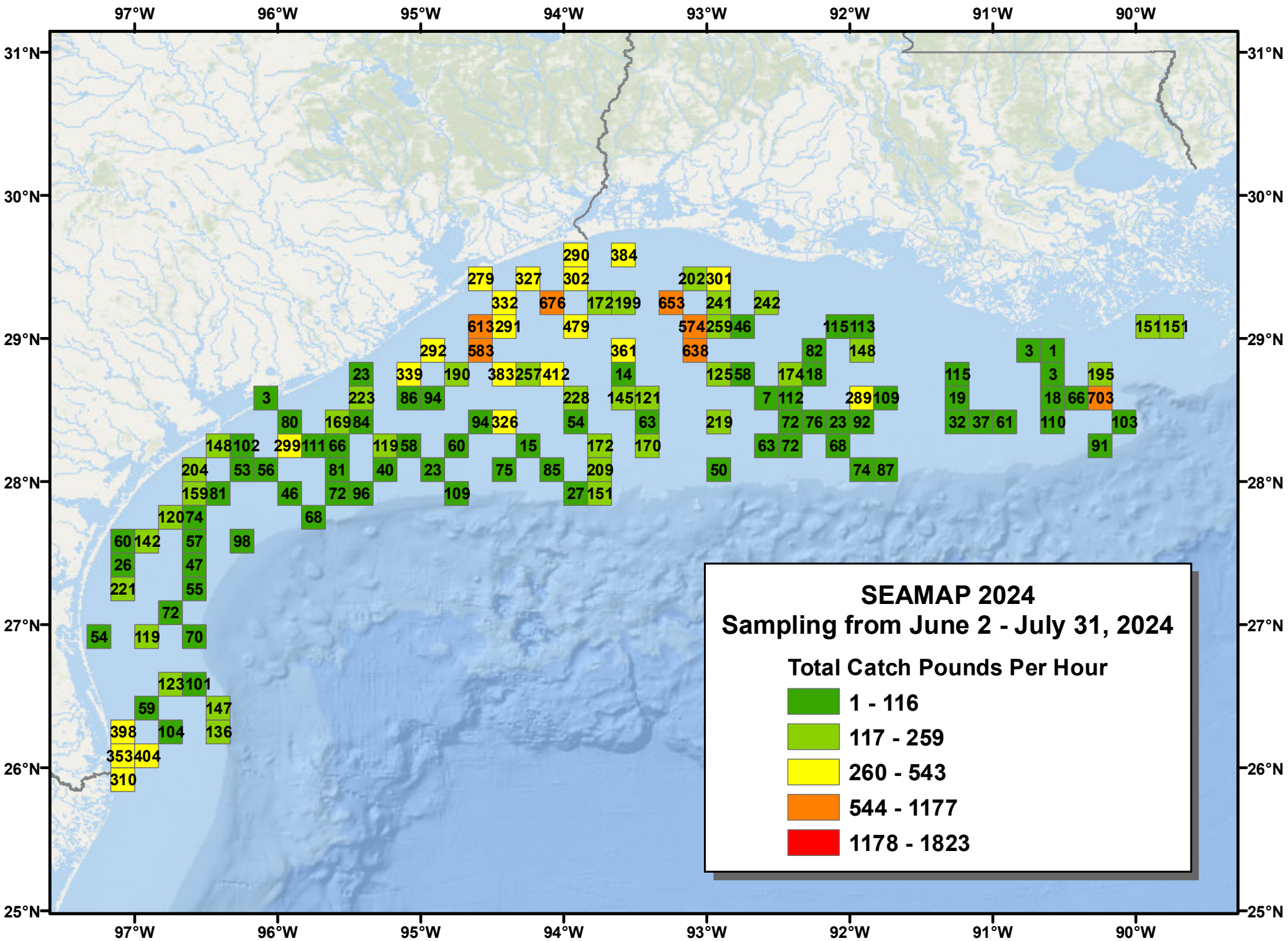
40

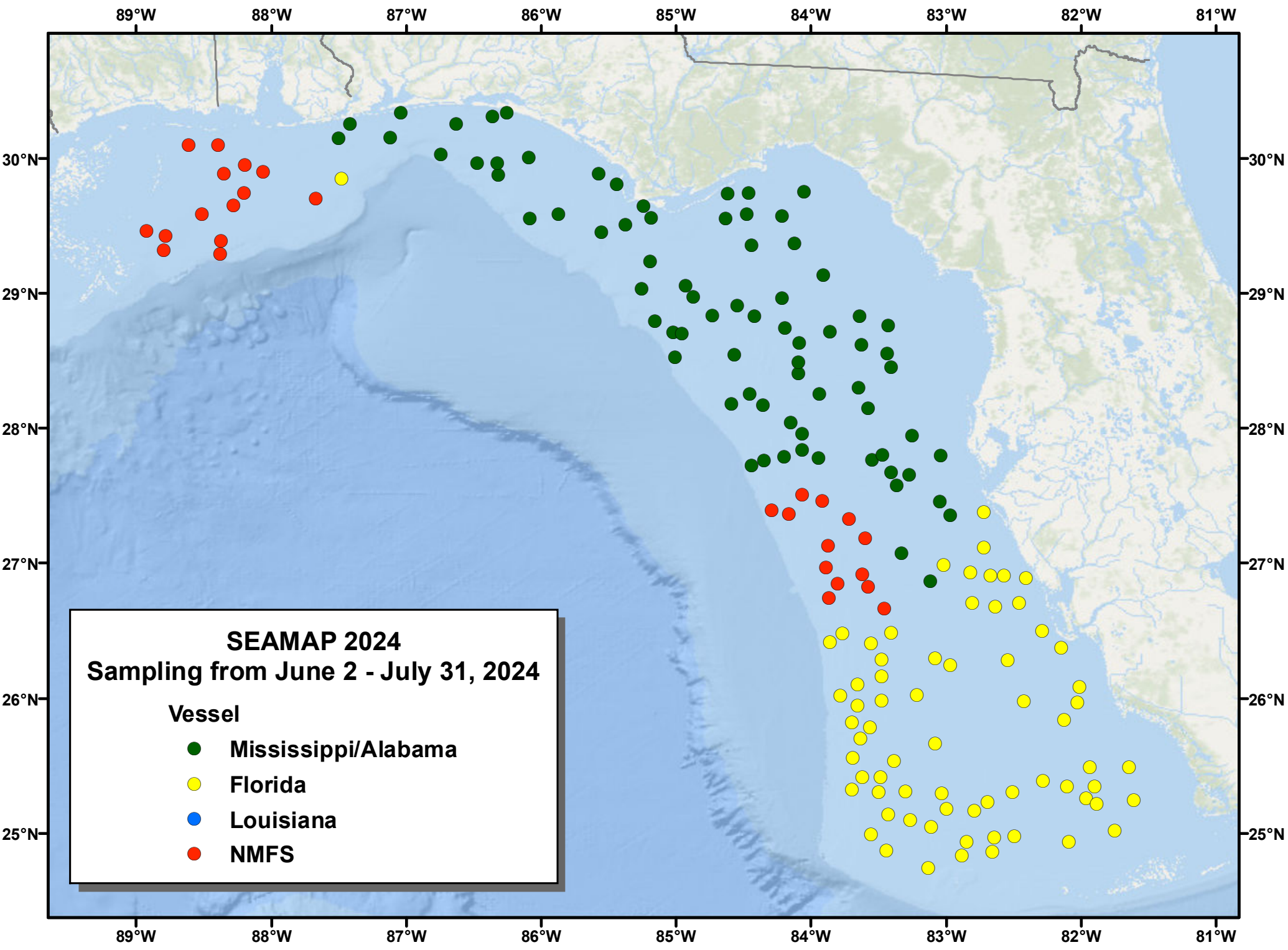
17

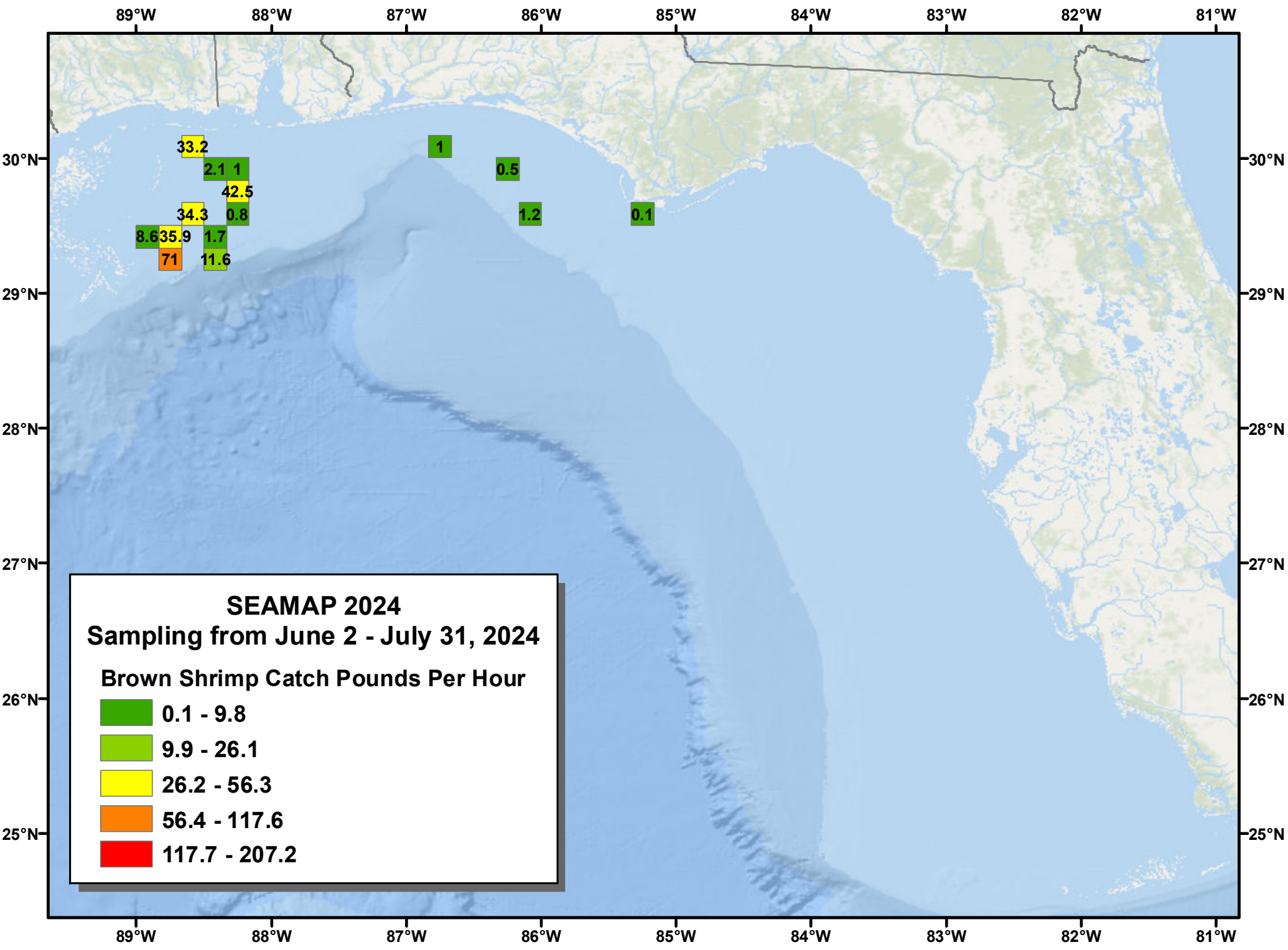
13

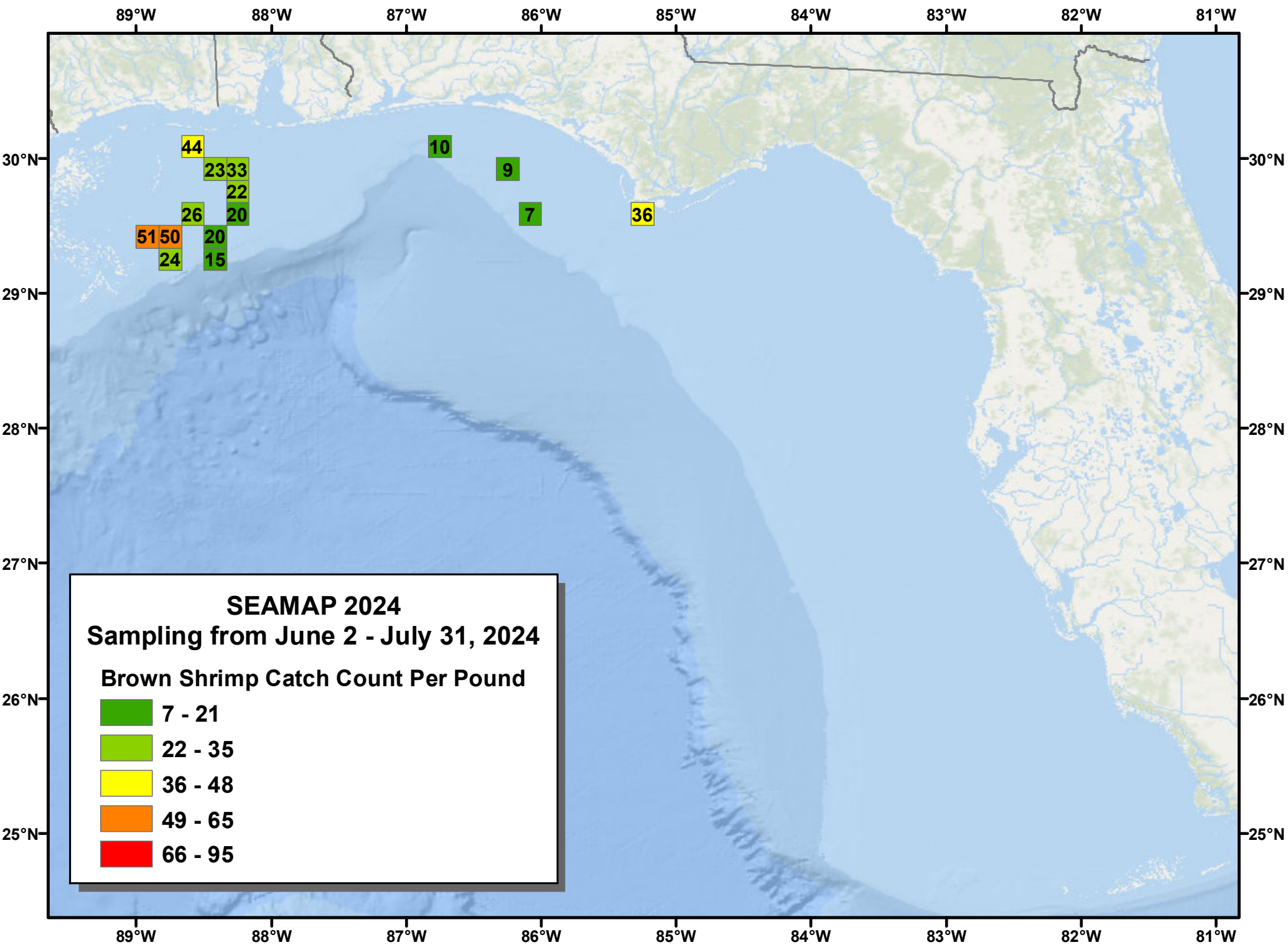
25

22
18









44

23 33

22

26

20

51 50

24

20

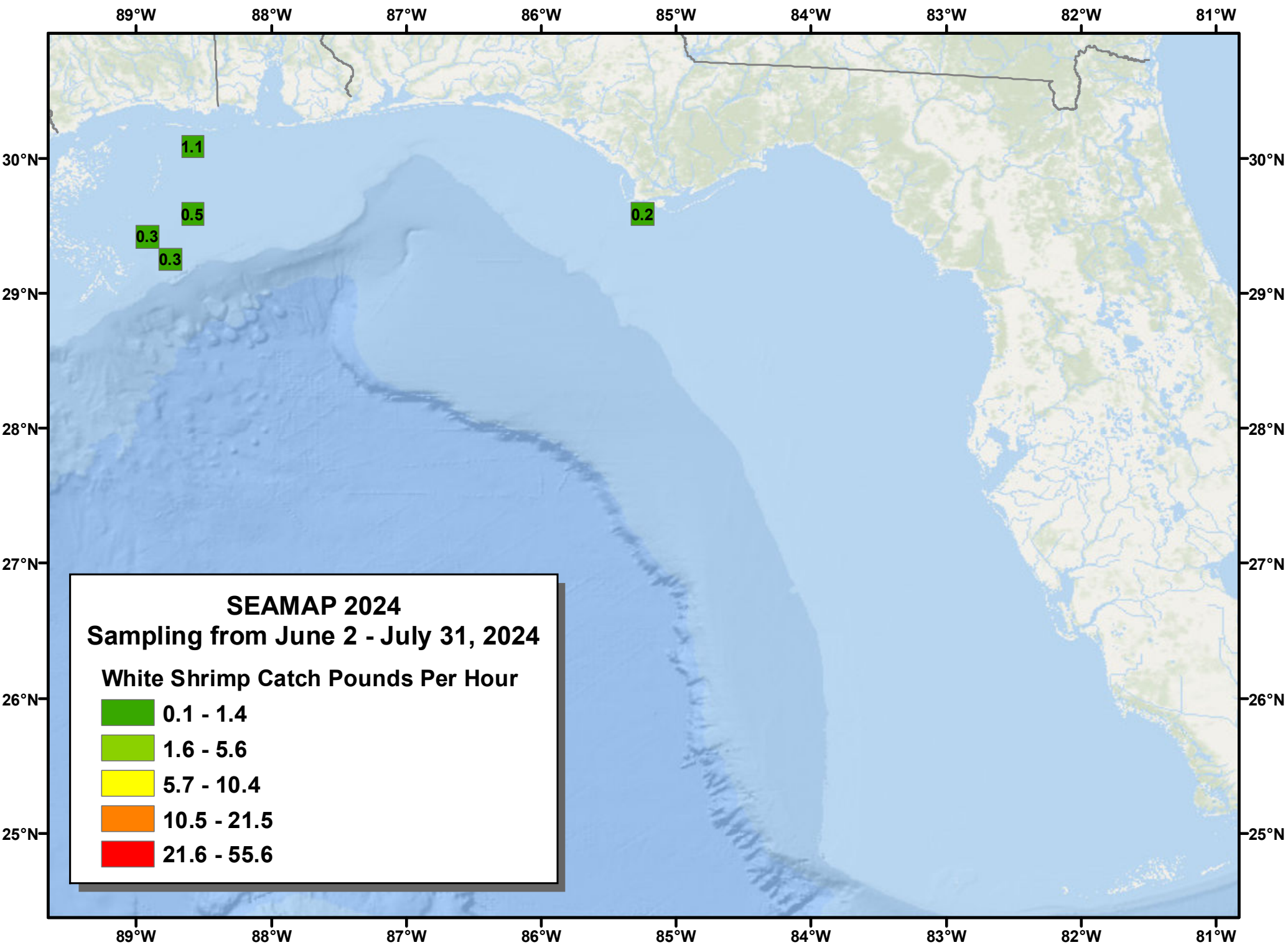
15

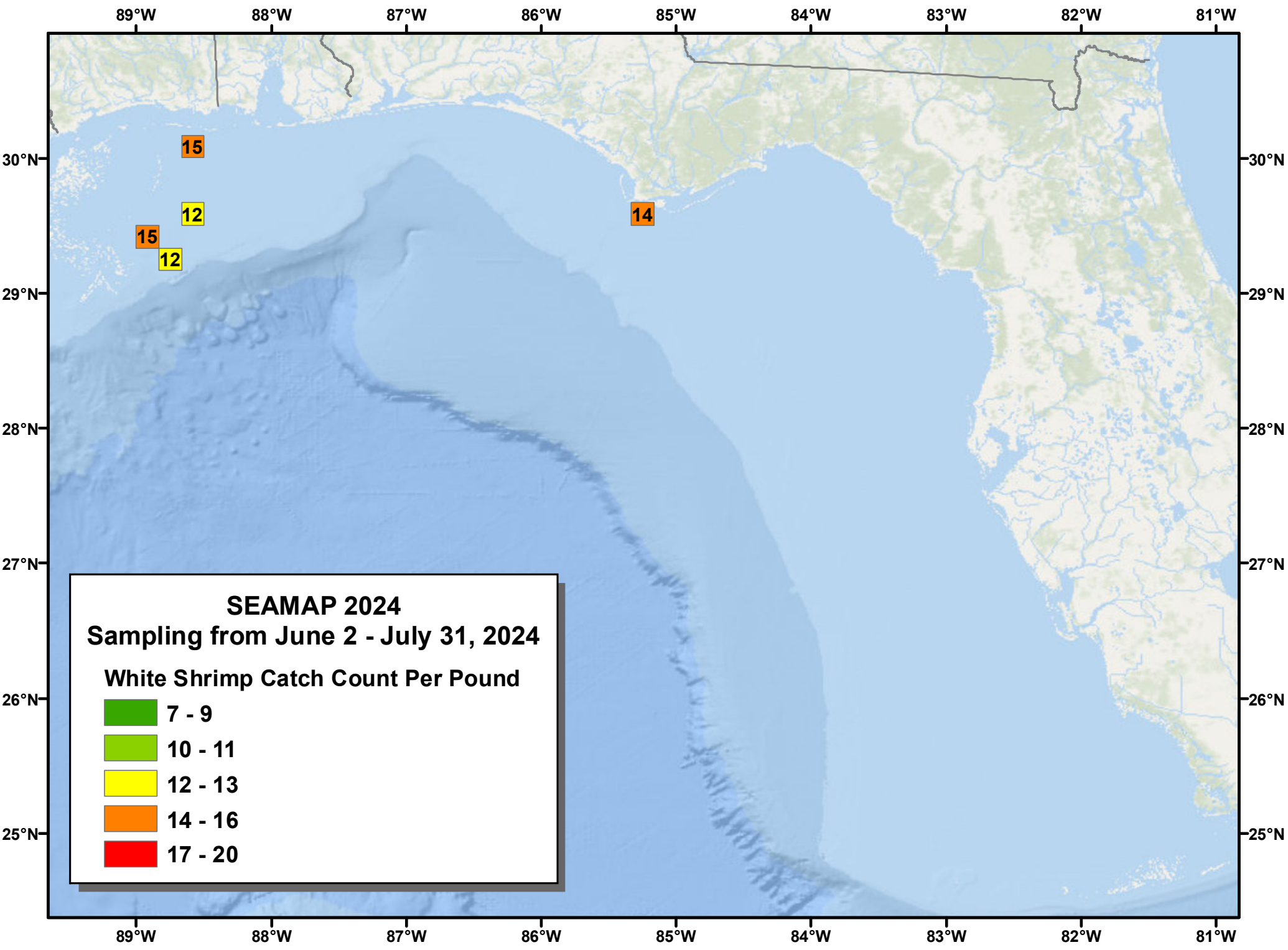
10

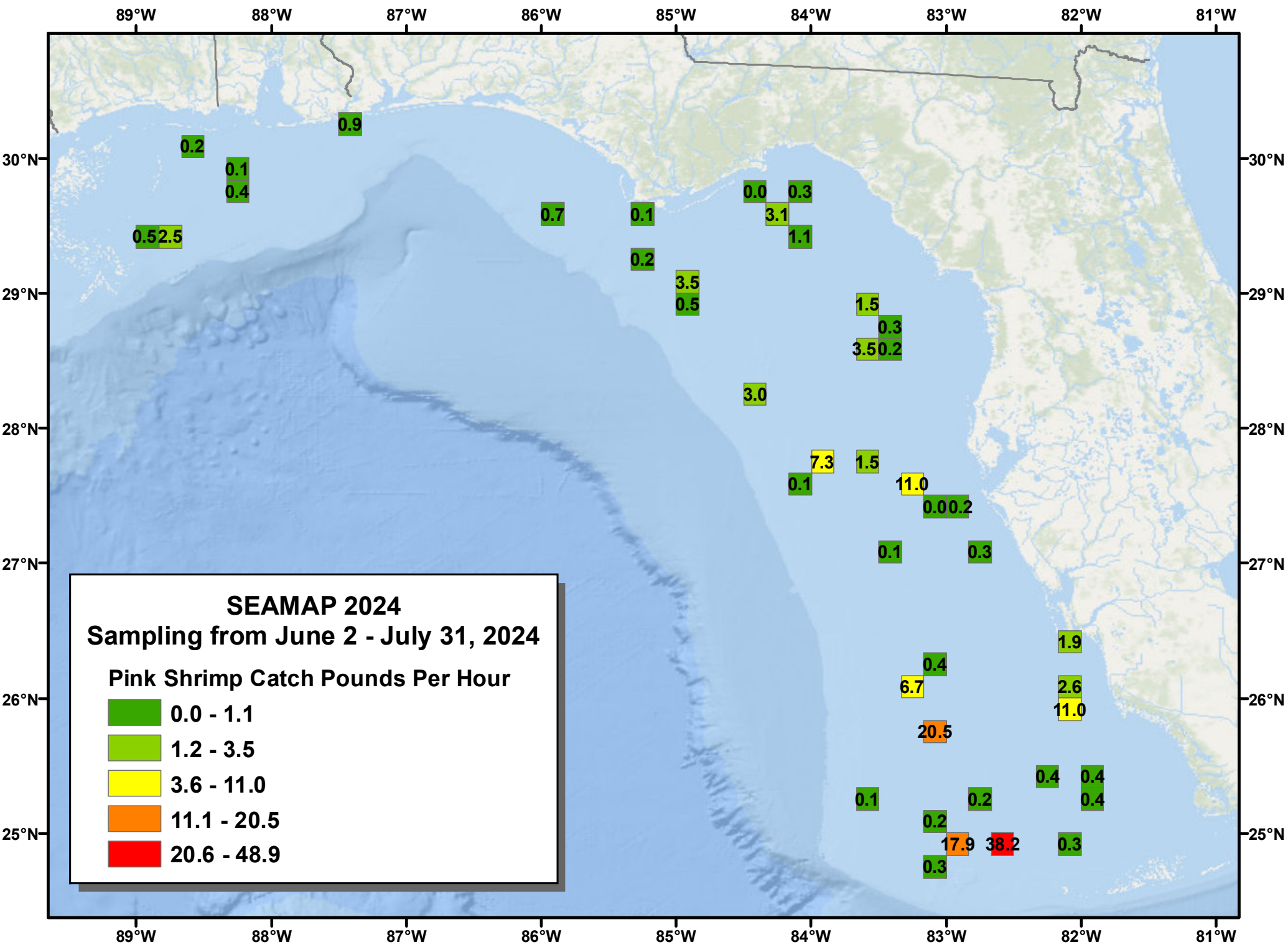
9

7

36







89°W

88°W

87°W

86°W

85°W

84°W

83°W

82°W

81°W

30°N

30°N

29°N

29°N

28°N

28°N

27°N

27°N

26°N

26°N

25°N

25°N

89°W

88°W

87°W

86°W

85°W

84°W

83°W

82°W

81°W

0.9

0.2

0.1

0.4

0.5

2.5

0.7

0.1

0.2

3.5

0.5

0.0

3.1

1.1

0.3

3.0

1.5

0.3

3.5

0.2

7.3

0.1

1.5

11.0

0.0

0.2

0.1

0.3

1.9

6.7

0.4

2.6

11.0

20.5

0.1

0.2

0.4

0.4

0.4

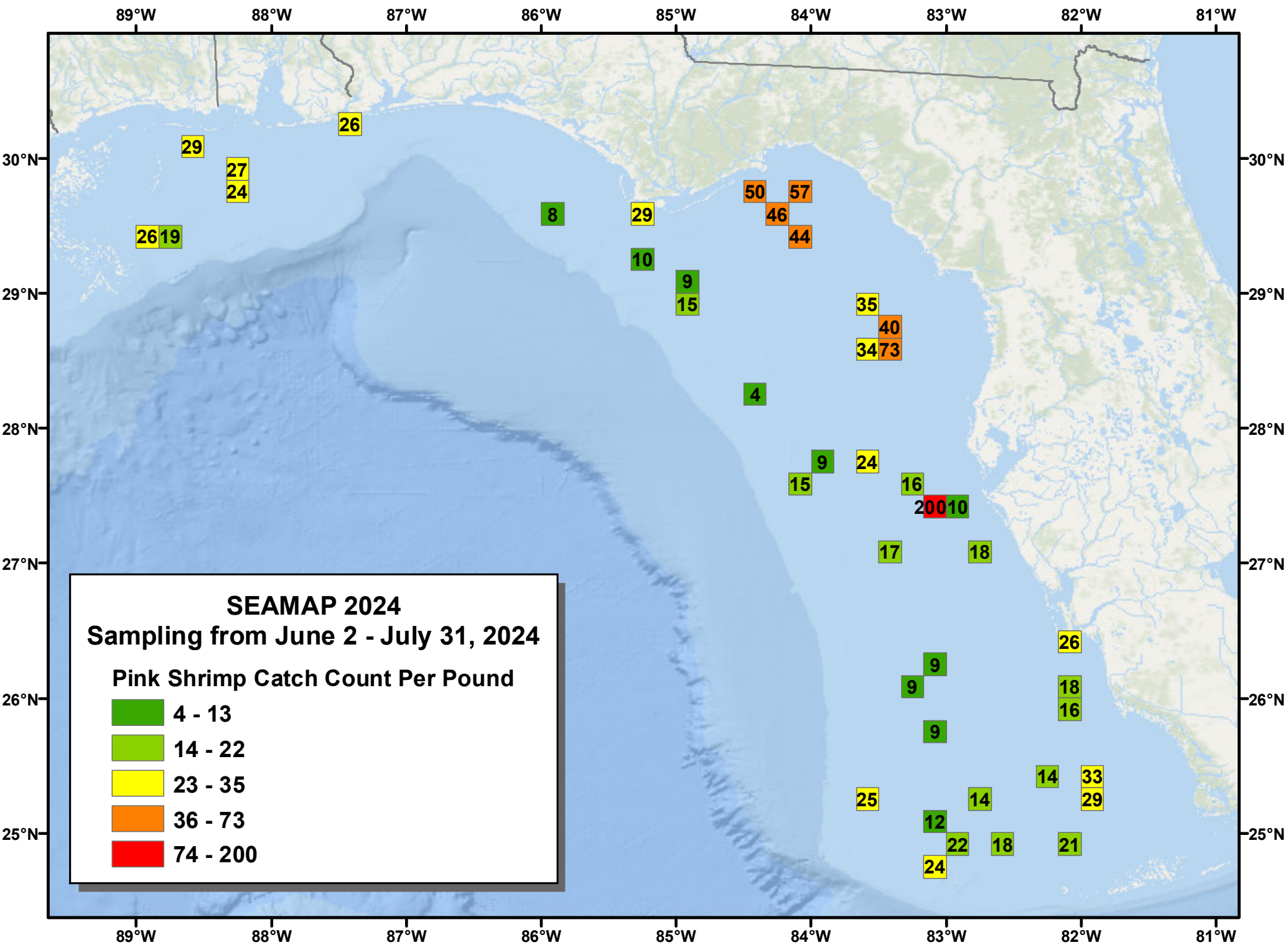
0.2

17.9

38.2

0.3

0.3



29

27
24

26

26 19

8

29

50

46

57

44

10

9

15

35

40

34

73

4

9

15

24

16

200

10

17

18

26

9

9

18

16

9

25

12

22

18

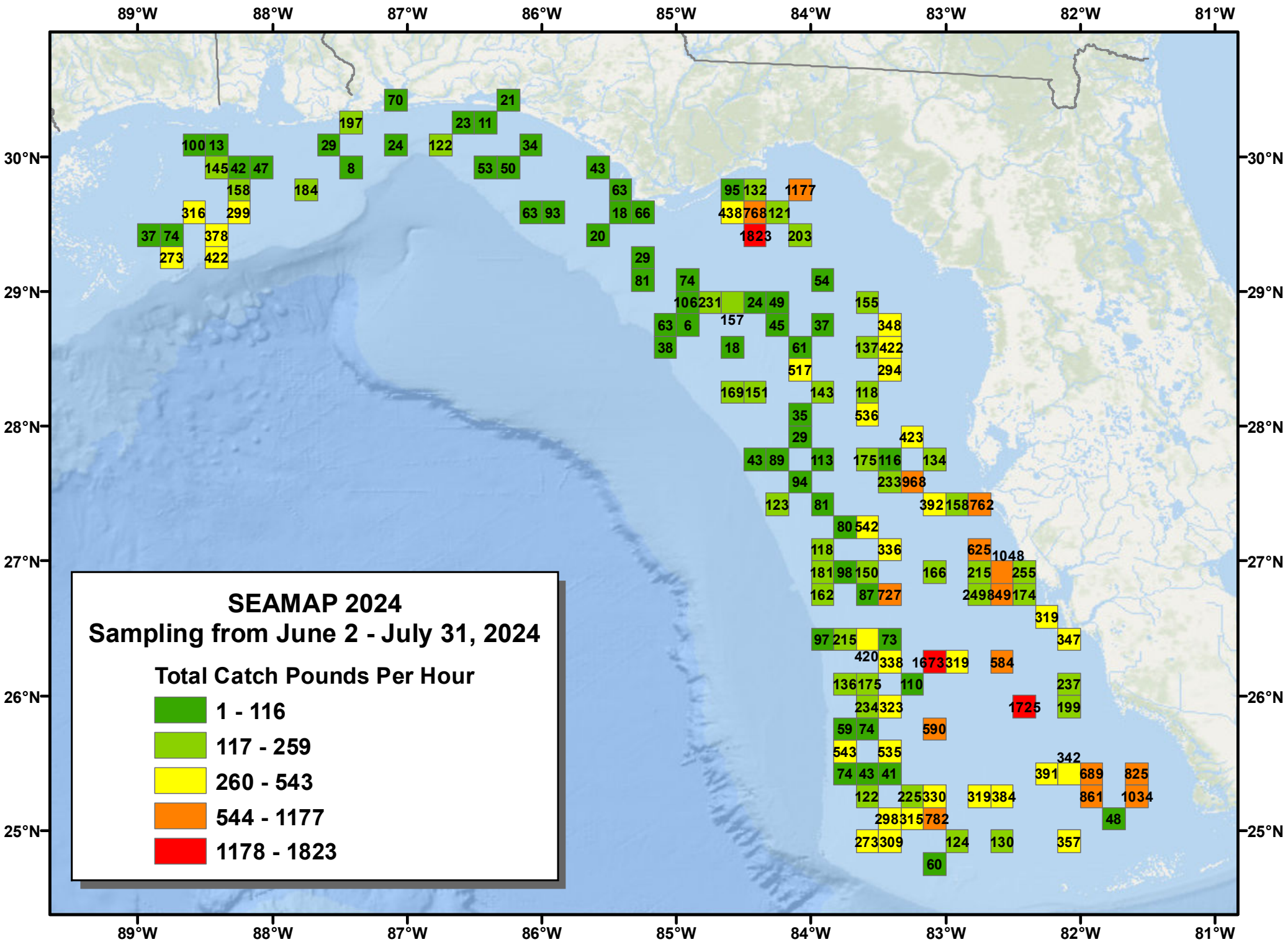
24

14

33

29

21



Approx. Longitude (W)	Approx. Latitude (N)	Catch Value
88.5	30.0	100, 13
88.0	30.0	145, 42, 47
87.5	30.0	197
87.0	30.0	70
86.5	30.0	23, 11
86.0	30.0	21
85.5	30.0	34
85.0	30.0	53, 50
84.5	30.0	43
84.0	30.0	63
83.5	30.0	18, 66
83.0	30.0	95, 132
82.5	30.0	1177
82.0	30.0	438, 768, 121
81.5	30.0	1823
81.0	30.0	203
88.5	29.5	37, 74
88.0	29.5	316, 299
87.5	29.5	158
87.0	29.5	184
86.5	29.5	8
86.0	29.5	29
85.5	29.5	20
85.0	29.5	29, 81
84.5	29.5	74
84.0	29.5	106, 231
83.5	29.5	24, 49
83.0	29.5	54
82.5	29.5	155
82.0	29.5	348
81.5	29.5	137, 422
81.0	29.5	294
88.5	29.0	273, 422
88.0	29.0	378
87.5	29.0	184
87.0	29.0	8
86.5	29.0	29
86.0	29.0	20
85.5	29.0	29, 81
85.0	29.0	74
84.5	29.0	106, 231
84.0	29.0	24, 49
83.5	29.0	54
83.0	29.0	155
82.5	29.0	348
82.0	29.0	137, 422
81.5	29.0	294
88.5	28.5	37, 74
88.0	28.5	316, 299
87.5	28.5	158
87.0	28.5	184
86.5	28.5	8
86.0	28.5	29
85.5	28.5	20
85.0	28.5	29, 81
84.5	28.5	74
84.0	28.5	106, 231
83.5	28.5	24, 49
83.0	28.5	54
82.5	28.5	155
82.0	28.5	348
81.5	28.5	137, 422
81.0	28.5	294
88.5	28.0	37, 74
88.0	28.0	316, 299
87.5	28.0	158
87.0	28.0	184
86.5	28.0	8
86.0	28.0	29
85.5	28.0	20
85.0	28.0	29, 81
84.5	28.0	74
84.0	28.0	106, 231
83.5	28.0	24, 49
83.0	28.0	54
82.5	28.0	155
82.0	28.0	348
81.5	28.0	137, 422
81.0	28.0	294
88.5	27.5	37, 74
88.0	27.5	316, 299
87.5	27.5	158
87.0	27.5	184
86.5	27.5	8
86.0	27.5	29
85.5	27.5	20
85.0	27.5	29, 81
84.5	27.5	74
84.0	27.5	106, 231
83.5	27.5	24, 49
83.0	27.5	54
82.5	27.5	155
82.0	27.5	348
81.5	27.5	137, 422
81.0	27.5	294
88.5	27.0	37, 74
88.0	27.0	316, 299
87.5	27.0	158
87.0	27.0	184
86.5	27.0	8
86.0	27.0	29
85.5	27.0	20
85.0	27.0	29, 81
84.5	27.0	74
84.0	27.0	106, 231
83.5	27.0	24, 49
83.0	27.0	54
82.5	27.0	155
82.0	27.0	348
81.5	27.0	137, 422
81.0	27.0	294
88.5	26.5	37, 74
88.0	26.5	316, 299
87.5	26.5	158
87.0	26.5	184
86.5	26.5	8
86.0	26.5	29
85.5	26.5	20
85.0	26.5	29, 81
84.5	26.5	74
84.0	26.5	106, 231
83.5	26.5	24, 49
83.0	26.5	54
82.5	26.5	155
82.0	26.5	348
81.5	26.5	137, 422
81.0	26.5	294
88.5	26.0	37, 74
88.0	26.0	316, 299
87.5	26.0	158
87.0	26.0	184
86.5	26.0	8
86.0	26.0	29
85.5	26.0	20
85.0	26.0	29, 81
84.5	26.0	74
84.0	26.0	106, 231
83.5	26.0	24, 49
83.0	26.0	54
82.5	26.0	155
82.0	26.0	348
81.5	26.0	137, 422
81.0	26.0	294
88.5	25.5	37, 74
88.0	25.5	316, 299
87.5	25.5	158
87.0	25.5	184
86.5	25.5	8
86.0	25.5	29
85.5	25.5	20
85.0	25.5	29, 81
84.5	25.5	74
84.0	25.5	106, 231
83.5	25.5	24, 49
83.0	25.5	54
82.5	25.5	155
82.0	25.5	348
81.5	25.5	137, 422
81.0	25.5	294
88.5	25.0	37, 74
88.0	25.0	316, 299
87.5	25.0	158
87.0	25.0	184
86.5	25.0	8
86.0	25.0	29
85.5	25.0	20
85.0	25.0	29, 81
84.5	25.0	74
84.0	25.0	106, 231
83.5	25.0	24, 49
83.0	25.0	54
82.5	25.0	155
82.0	25.0	348
81.5	25.0	137, 422
81.0	25.0	294